

radwag.com



# DWM HY10 BASIC

## Checkweigher



# DWM HY10 BASIC

## Checkweigher



Maximum capacity [Max]:  
**1500 – 6000 g**  
Readability [d]:  
**0.5 – 2 g**

The **DWM HY10 Basic Checkweigher** is a compact device that guarantees **100% inspection** of a production batch. It is easy to install and integrate into the production line. A number of ready-made components simplify the scale's adaptation to the requirements of a specific production line.

## What Speaks to the Choice of **DWM HY10 Basic** Checkweigher?

### Main features:

- 10.1-inch color display
- Touch panel
- Magnetolectric measuring module
- Brushless motors
- Pneumatic discrimination system
- SQL database
- No limitation of assortment and operator base
- Current statistics
- Possibility of integration with the line and the customer's control system.

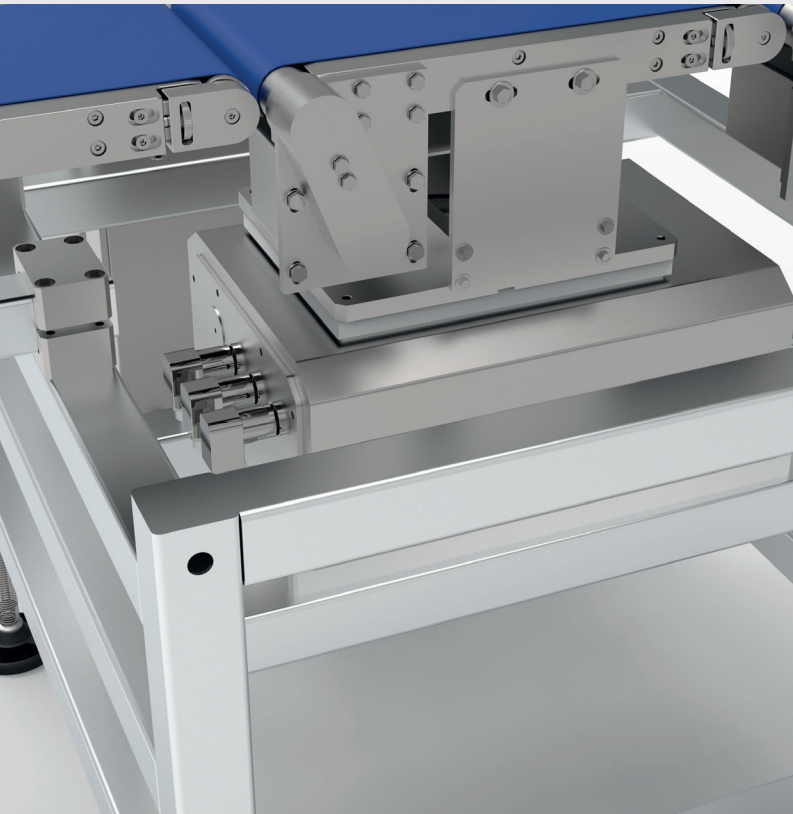
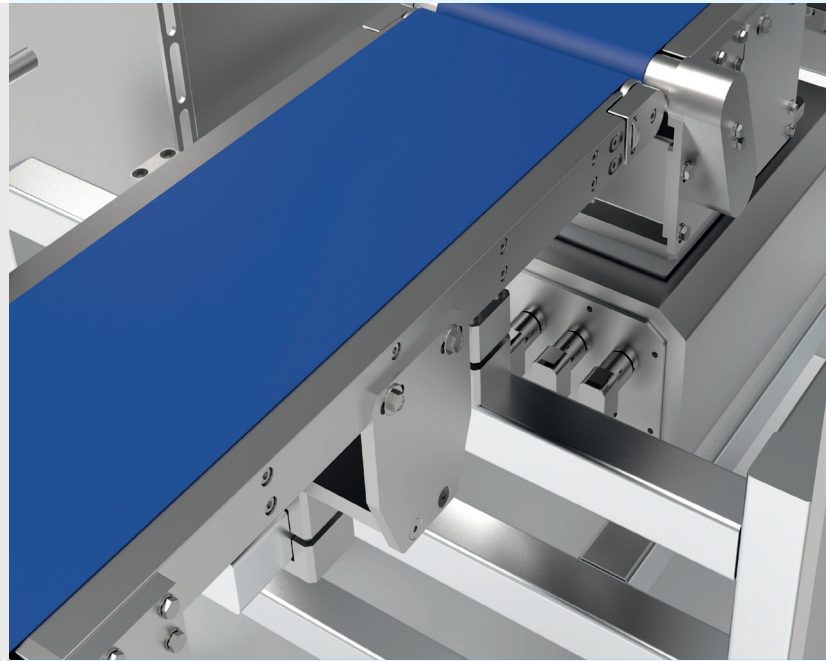


## Precise Measurement and Easy Operation

The device provides a capacity of up to **150 pcs/min**. It guarantees **precise measurement**, records data to a database, rejects defective products with an integrated rejecter, and prepares a specialized inspection report. Thanks to the 10.1-inch display and user-friendly interface, **operation of the scale is easy and comfortable**.

## Speed, Accuracy and Resistance

The **DWM HY10 Basic Checkweigher** is equipped with a reliable MWMH series measuring unit – a magnetolectric system. MWMH guarantees **high speed, readability and resistance to mechanical shock**. Maintenance-free BLDC type motors were used to drive the scale. The structure and control cabinet are made of stainless steel. The correctness of data recording and storage is supervised by the SQL database system. The large, capacious database makes it possible to register any number of operators and assortments.



## Magnetolectric Measuring Module: Speed and Readability

The **MWMH module** enables reading of real results with unprecedented readability and stunning repeatability. Its mechanical design, devoid of sharp edges and narrow gaps, predestines the module to work in the most demanding conditions.

The measurement speed achieved by the **MWMH module** makes it possible to use it in **automated production lines**. For fast and dynamic measurement processes, the weighing module's transducer can operate at a sampling rate of **3200 pom/s**.

# 1. Scale designation

Example scale code:

**MWMH-HY10-35.35.60.15.70.A.1,5.L**

**MWMH**

design based on a magneto  
-electric module

**H**

stainless steel construction

**HY10**

scale equipped  
with PUE HY10 terminal

**35 cm**

length of infeed conveyor

**35 cm**

length of weighing conveyor

**L**

direction of transport:  
L - left, P - right

**1,5 kg**

load capacity  
in kilograms

**A**

type of discriminator:  
A - air blower,  
P - pusher

**70 cm**

working height of the scale

**15 cm**

width of conveyors

**60 cm**

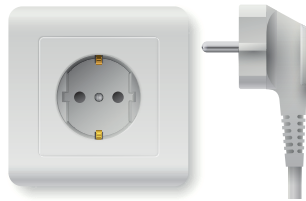
length of exit  
conveyor/discriminator



## 2. Electrical and mechanical parameters

<b>Speed</b>	0,4-1 m/s
<b>Efficiency</b>	up to 150 pcs/min
<b>Power supply</b>	110-230 VAC 50-60 Hz
<b>Power consumption</b>	do 0.5 kW
<b>Fuse</b>	10A

### Electrical connection



European C plug



British plug G

<b>Air connection</b>	connector 8 mm
<b>Air consumption</b>	up to 1.4 l per cycle for the pusher
<b>Standard interfaces</b>	RS 232/ Ethernet Protocol ASCII/ Modbus

### Optional equipment

- Interface Ethernet IP/ Profinet/ Profibus
- Buzzer
- Signal red + buzzer
- Signal red-green + buzzer
- Signal red-green-red + buzzer

### Strip material

PCV

### Conveyor material

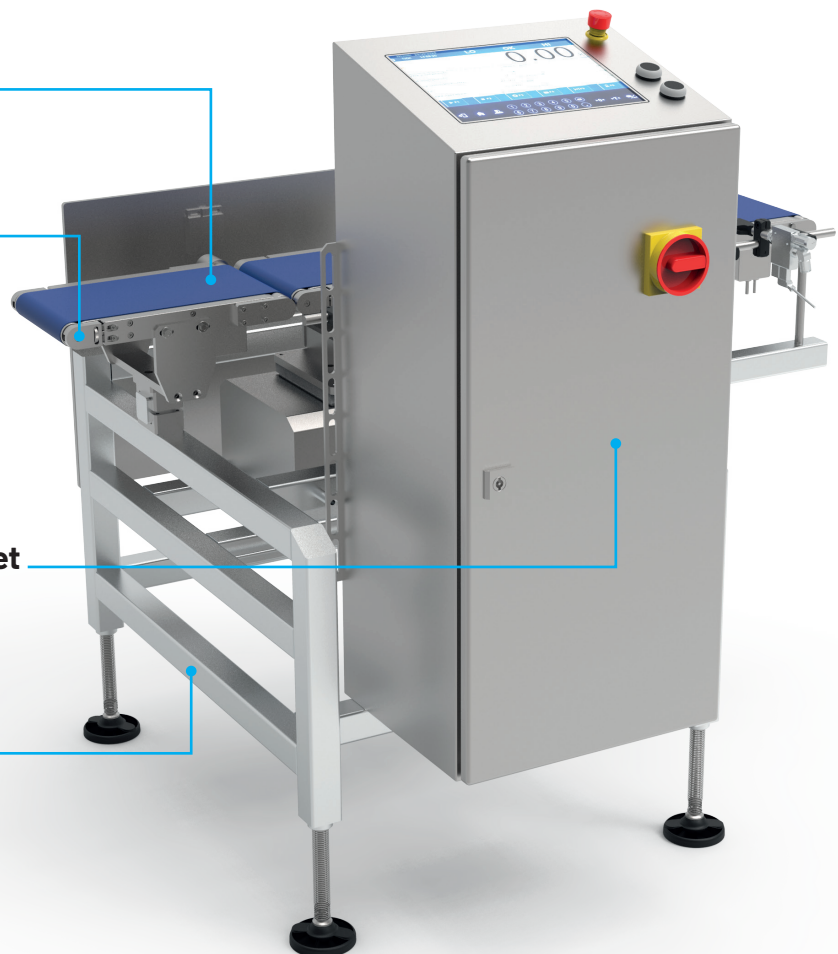
anodised aluminium/  
stainless steel/  
plastic

### Material of the control cabinet

stainless steel AISI 304

### Material of construction

stainless steel AISI 304



### 3. Selecting the scale for the product

#### Scale capacity

The load capacity of the scale must be greater than the maximum gross weight of the goods.



To weigh goods heavier than 6000 g,  
please enquire about the individual design of the DWM HY10 scale.

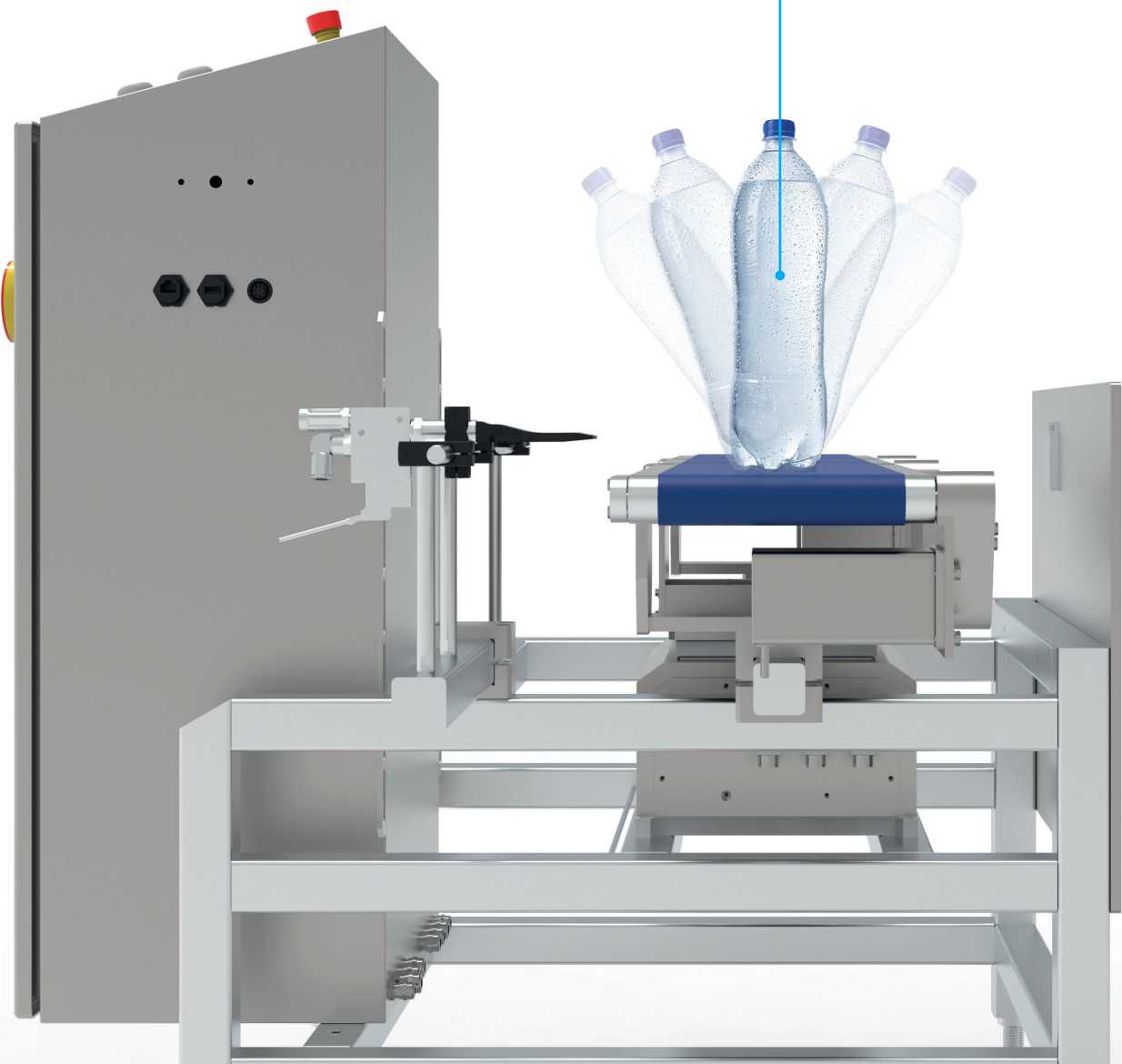


## Centre of gravity

Pay attention to the centre of gravity of the product being weighed. If it is, for example, a tall bottle whose centre of gravity is high above the belt, there is a high probability of the product tipping over. This should be brought to the attention of the customer.

### Centre of gravity

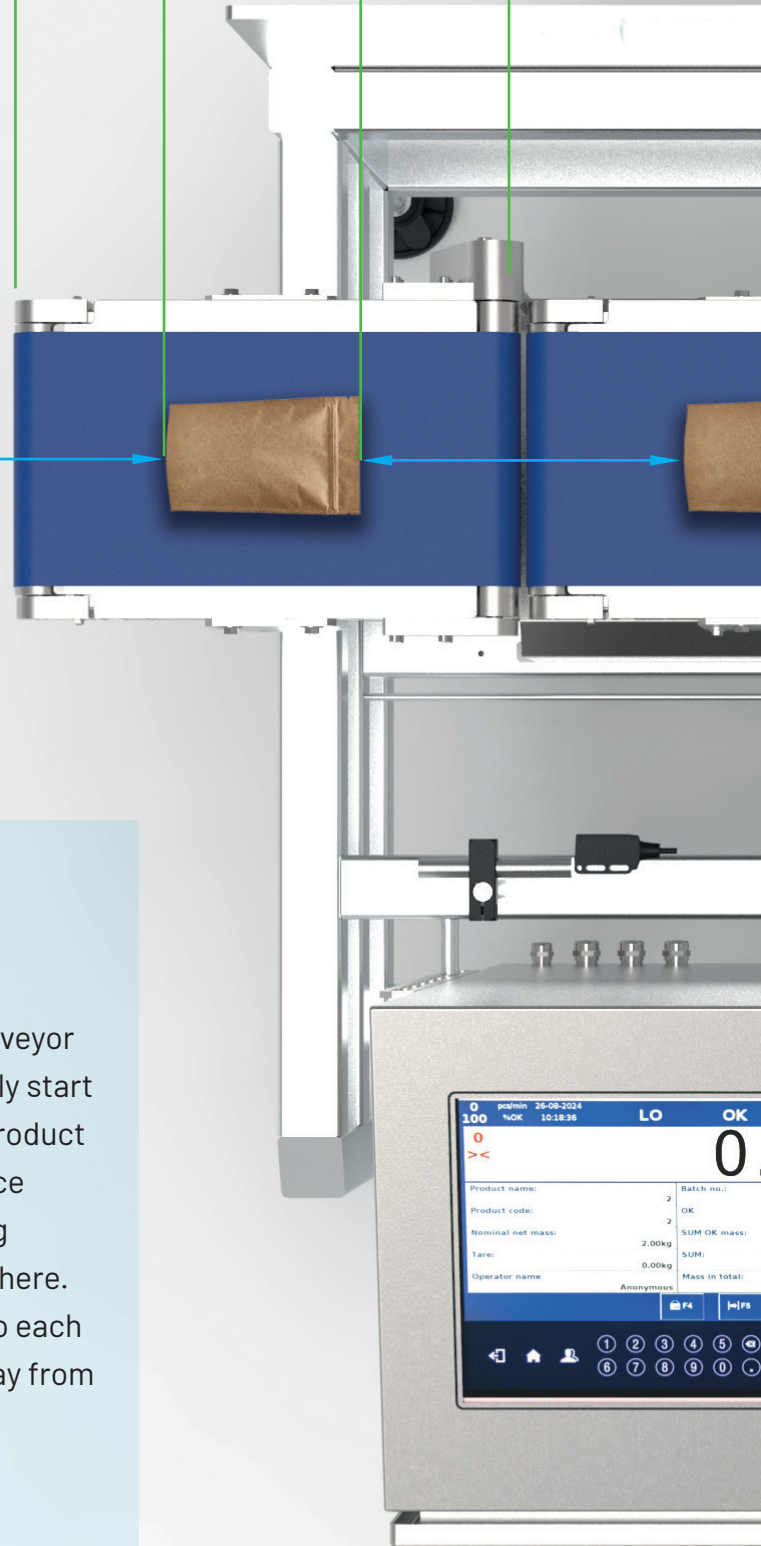
The high centre of gravity of the product being weighed favours tipping over during transfer through the conveyor in a dynamic balance.



length of conveyor = length of product + min. 200 mm

length of product

sufficient distance between the products to be weighed to ensure that only the product being weighed is present on the weighing belt

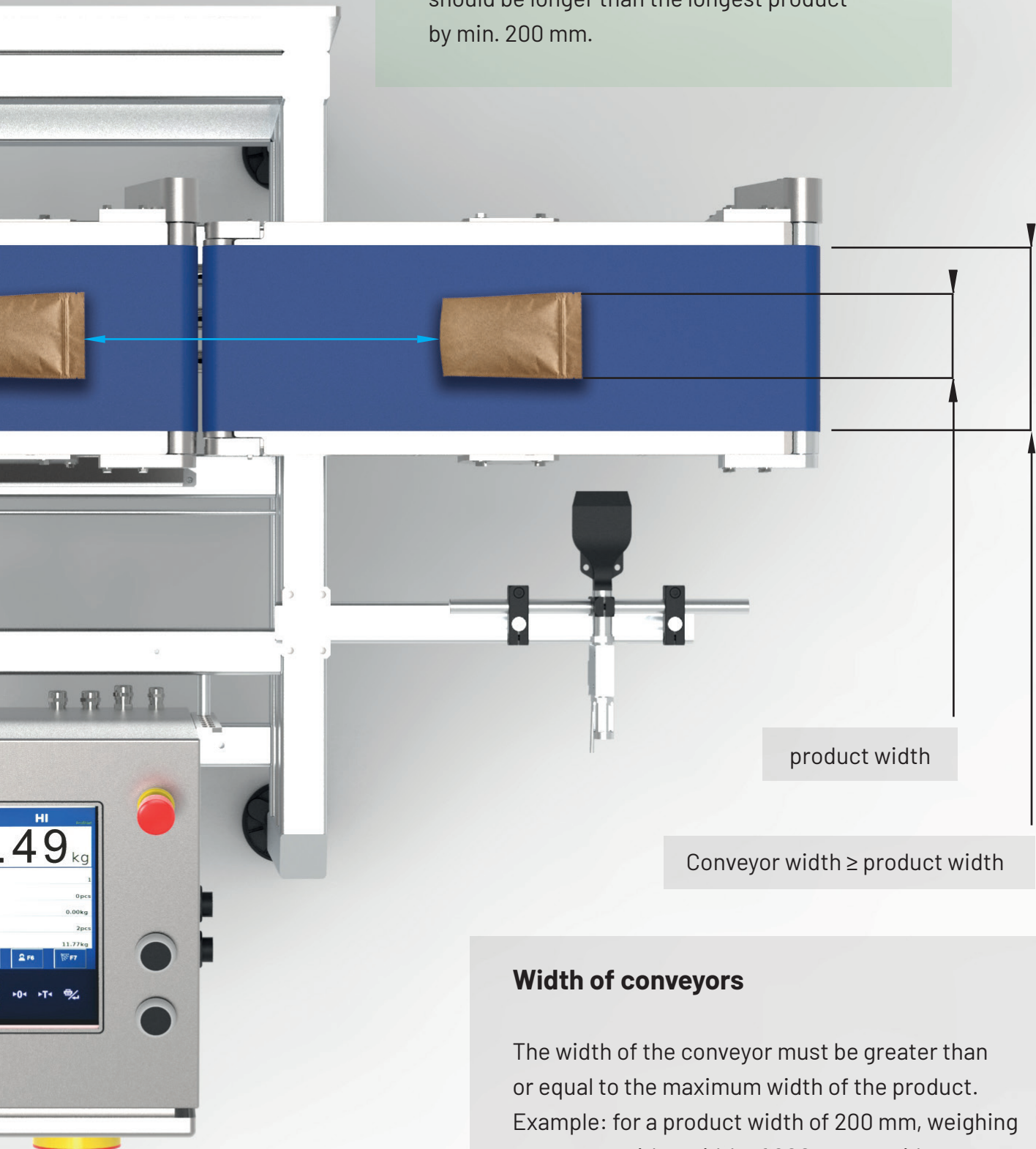


## Distances between products

To ensure correct weighing on the weighing conveyor, only one product must be on the conveyor during measurement. The next product can only start to enter the weighing platform once the first product has started to leave the weighing platform. Once the next product has fully entered the weighing conveyor, the first product must no longer be there. This means that products that are very close to each other on the line have to be pre-positioned away from each other even before they enter the scales or on the entry conveyor.

## Length of conveyors

The length of the conveyors should be selected to the length of the longest product being weighed: the length of the weighing conveyor should be longer than the longest product by min. 200 mm.



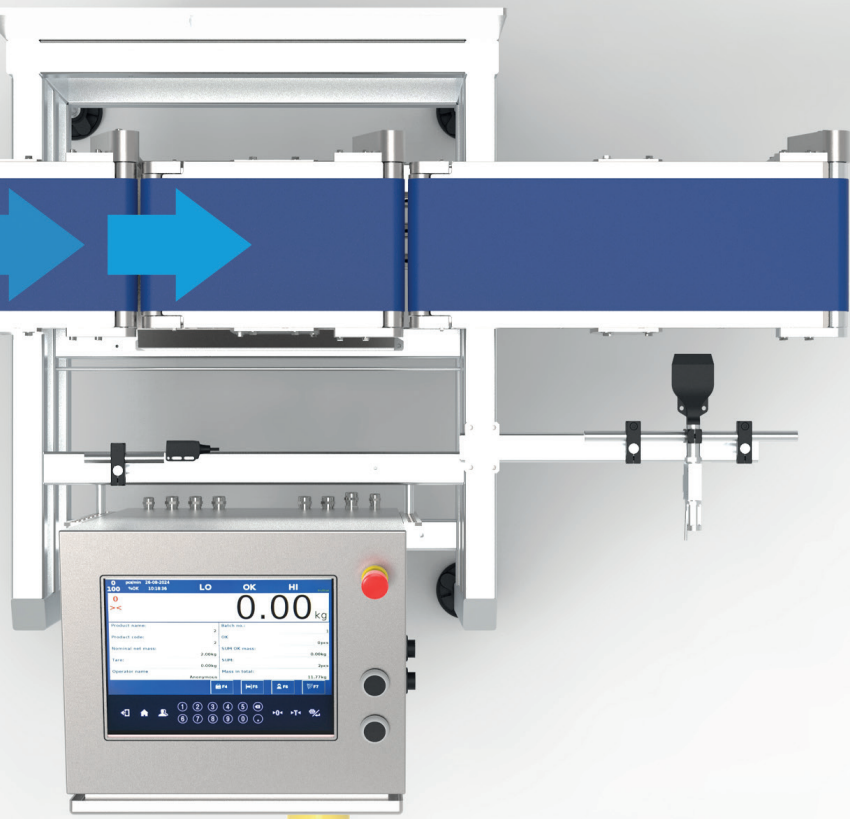
## Width of conveyors

The width of the conveyor must be greater than or equal to the maximum width of the product. Example: for a product width of 200 mm, weighing conveyors with a width of 200 mm or wider must be selected.

#### 4. Direction of transport



All automatic scales have a single transport direction defined at the production stage. The customer cannot change it at any time after purchase.



Direction of scale operation - right

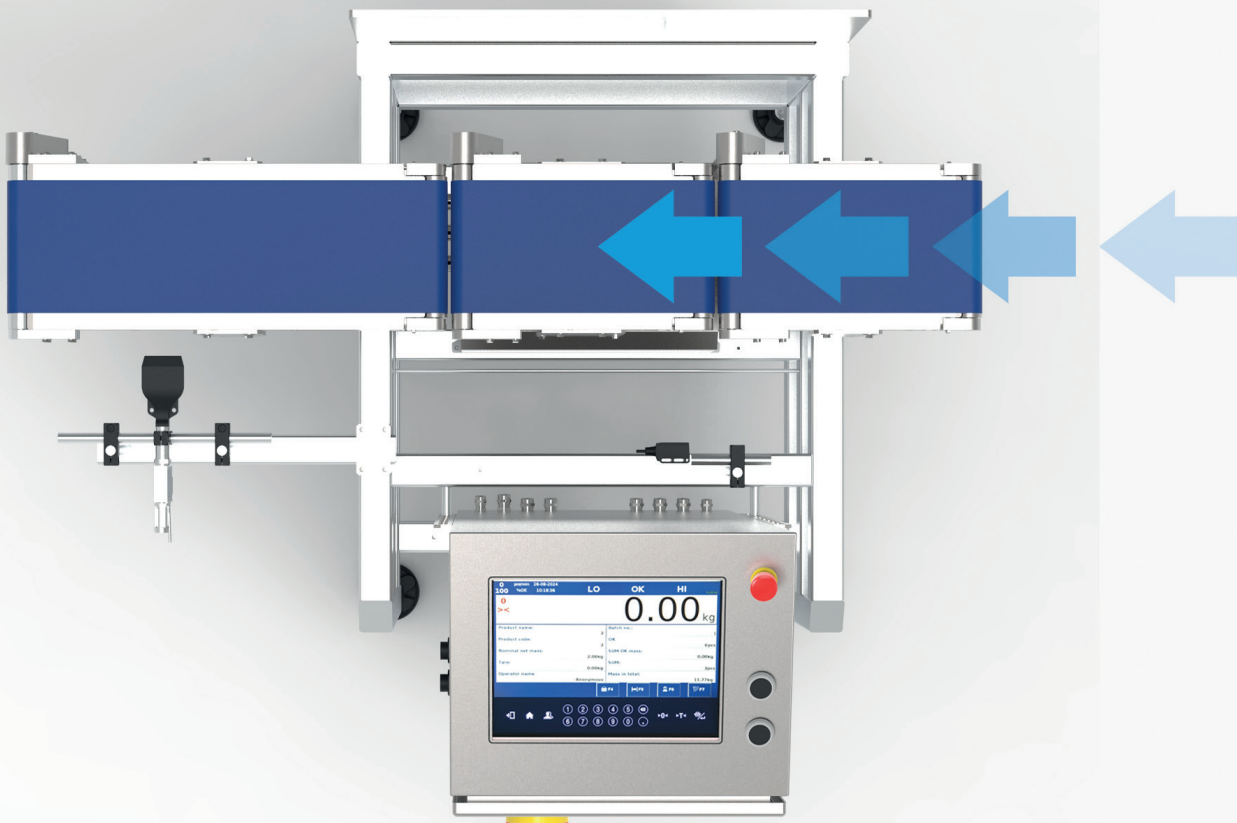
#### 5. Rejection system

There are two reject systems in the scales: **the air blower system** and **the actuator system**.

**The air blower system** ensures smooth operation and does not generate vibrations.

It should be used to weigh products weighing **no more than 300 g**.





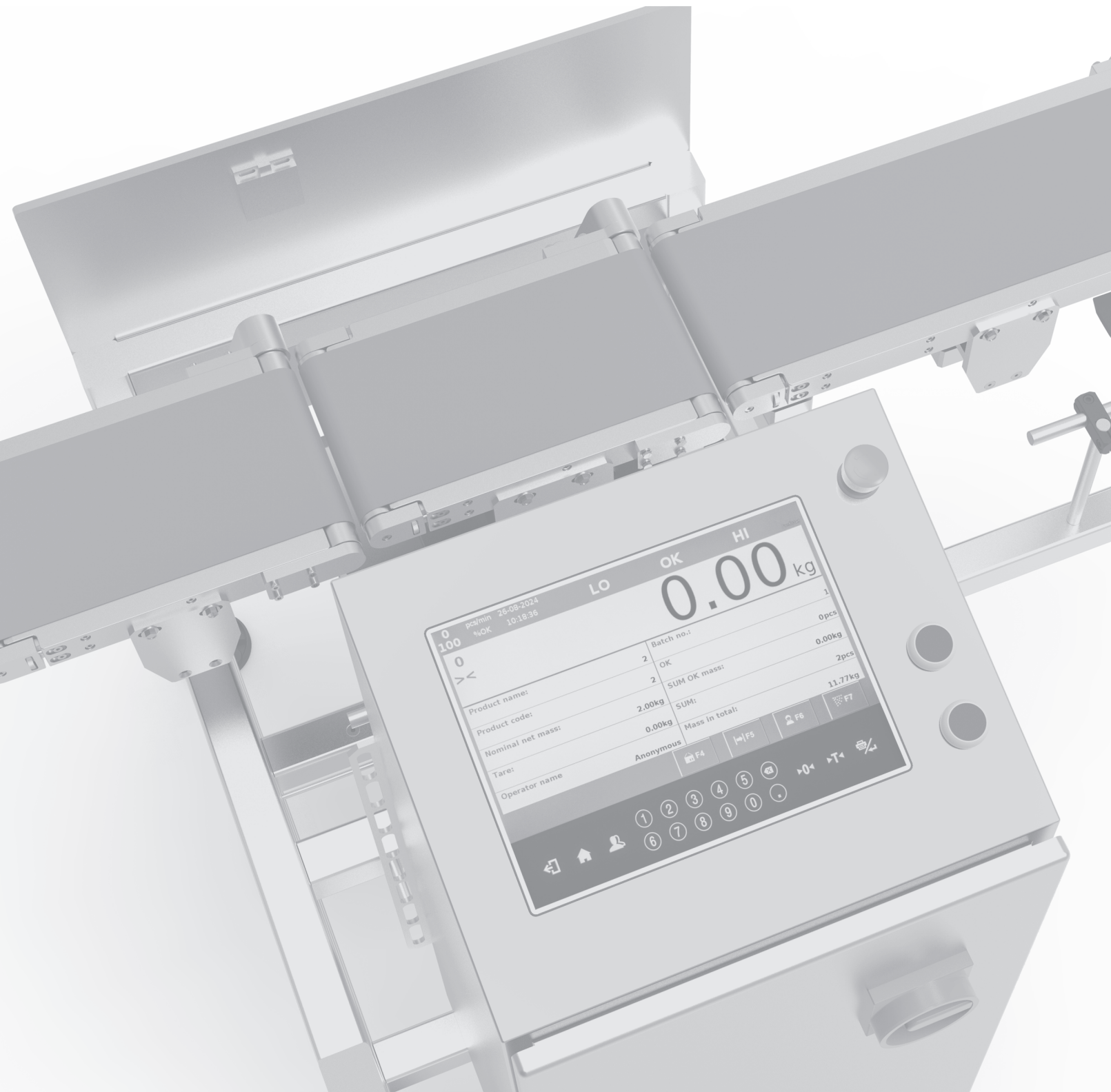
Direction of balance operation - left

**The pusher works** on the principle of the piston extending to generate shocks that can affect the measurement system.

It should be used for weighing products weighing **more than 300 g**.



radwag.com



0 100

0 OK HI

0.00 kg

0 pcs/min 26-08-2024  
%OK 10:18:36

Product name:	Batch no.:	1
Product code:	OK	0 pcs
Nominal net mass:	SUM OK mass:	0.00kg
Tare:	SUM:	2 pcs
Operator name	Mass in total:	11.77kg

Anonymous

F4 F5 F6 F7

1 2 3 4 5  
6 7 8 9 0

← Home User →0← →T←